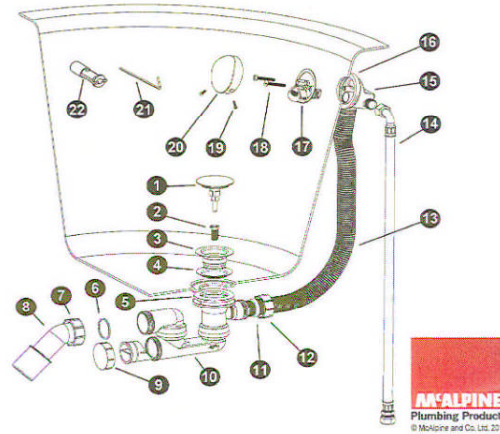
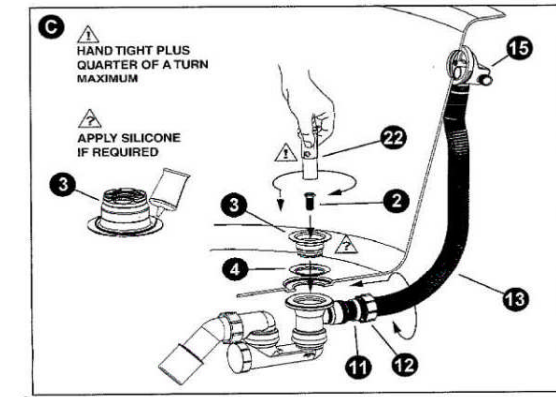
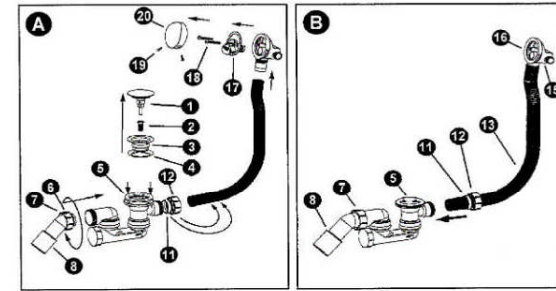


HCN3165CC

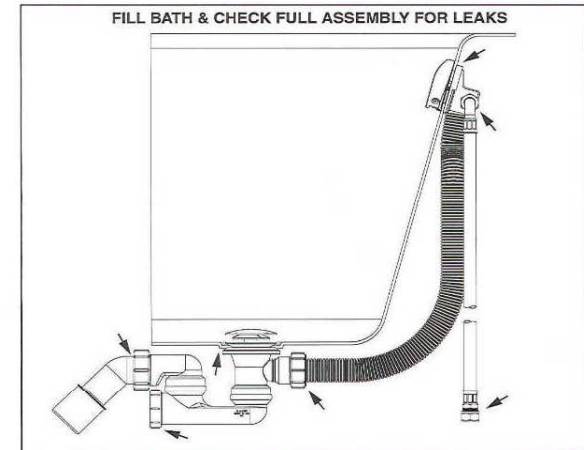
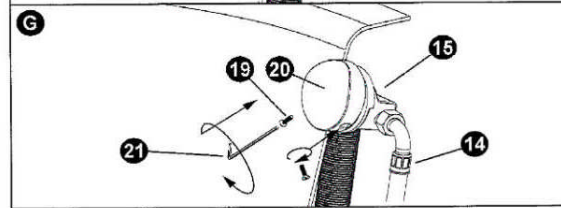
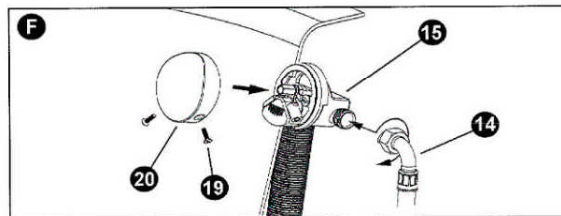
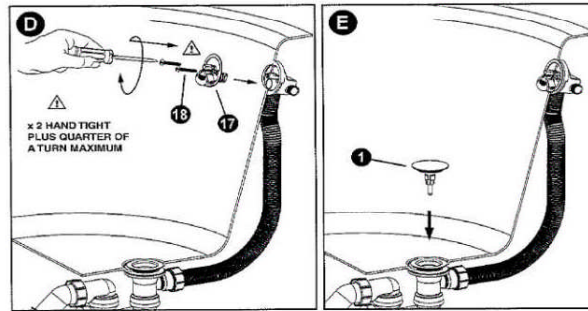
1	Plug assembly (Removable)	12	1.25" BSP compression nut
2	Waste ferrule	13	Flexible overflow pipe
3	Waste flange	14	Flexible inlet hose
4	Waste Flange seal	15	Overflow body
5	Rubber waste seal	16	Rubber Overflow Seal
6	Rubber seal	17	Overflow clamp plate / Nozzle body
7	1.5" BSP nut	18	Overflow clamp plate screws
8	Trap outlet 40/50mm	19	Key Bolts (x2)
9	Trap cleaning eye	20	Overflow cover
10	Trap waste body	21	Allen Hex Key for tightening
11	Rubber Seal	22	Plastic Key for tightening



1



2



- Mixer valve (not supplied) must be installed according to manufacturers guidelines and Local authority regulations.
- Protection against pollution of potable water installations and general requirements of devices to prevent pollution by backflow as detailed in EN 1717 should be observed.
- Flexible inlet pipe should be installed in a self-draining position.